



BEACON FEN ENERGY PARK

Planning Inspectorate Reference: EN010151

Appendix 8.8 Geophysical Survey Report – Cable and Access Routes Part 6

Document Reference: 6.3 ES Volume 2, 6.3.61

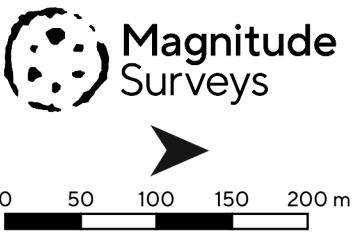
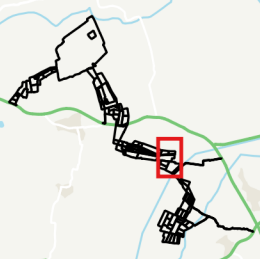
April 2025

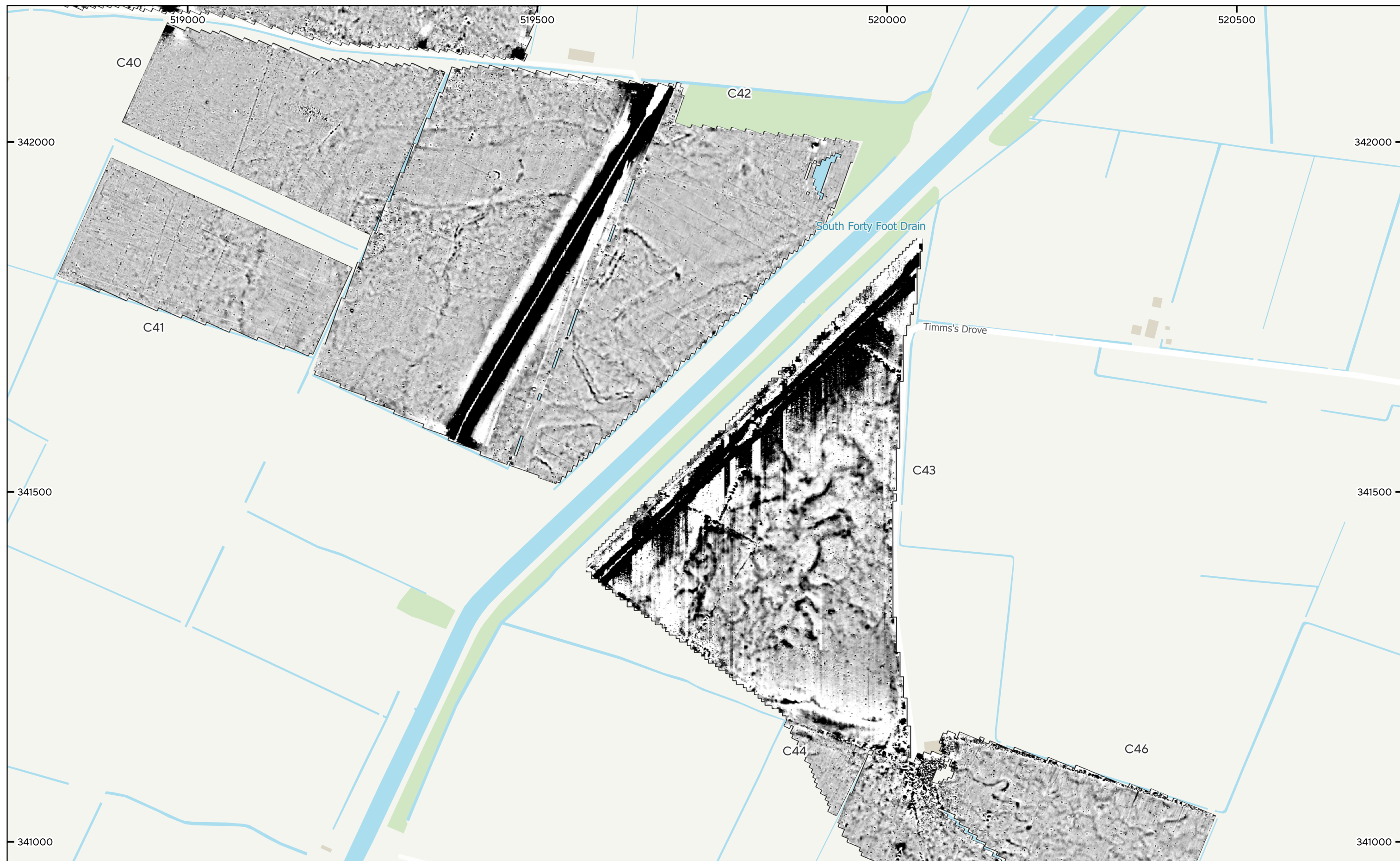




MSTF1735 - Beacon Fen Cable Route, Lincolnshire
Figure 19 - Magnetic Interpretation over Historical Maps and Satellite
Imagery (Cable Route Areas C31-C33 & C39-C42)
1:5,000 @ A3
© Magnitude Surveys 2024
Contains historical mapping © CLS Data 2024: Ordnance Survey, 6" 2nd
edition c. 1882-1913
Contains satellite imagery © Bing Satellite 2024

- | | | | |
|-----------------------------|-------------------------|-----------------------|--------------------|
| Archaeology Possible (Weak) | Natural (Strong) | Undetermined (Strong) | --- Service |
| Agricultural (Weak) | Natural (Weak) | Undetermined (Weak) | — Drainage Feature |
| Agricultural (Spread) | Natural (Spread) | Undetermined (Spread) | • Ferrous (Spike) |
| Industrial/Modern | Magnetic Disturbance | Agricultural (Trend) | |
| Industrial/Modern (Spread) | Ferrous/Debris (Spread) | | |





MSTF1735 - Beacon Fen Cable Route, Lincolnshire
Figure 20 - Magnetic Total Field (Lower Sensor) (Cable Route Areas C39-C46)
1:5,000 @ A3
© Magnitude Surveys 2024
Contains Ordnance Survey data © Crown Copyright and database right 2024

